

541322  
 13  
 P3

**TETRA TECH RMC, Inc.**  
 1540 E. Paradise Ave., Suite 101, Greenwood Village, CO, 80111  
 TEL: 303.747.6600 FAX: 303.747.1100

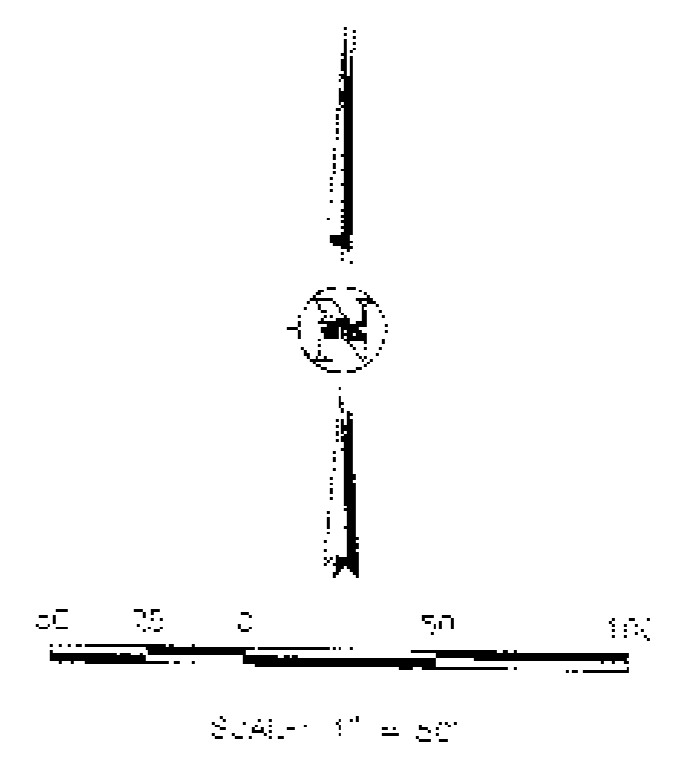
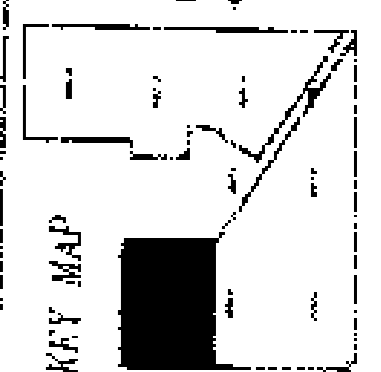
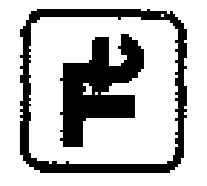
**TC**

NO.	DESCRIPTION	DATE
1	ISSUE FOR PERMIT	07/02/04
2	ISSUE FOR PERMIT	07/02/04
3	ISSUE FOR PERMIT	07/02/04
4	ISSUE FOR PERMIT	07/02/04
5	ISSUE FOR PERMIT	07/02/04
6	ISSUE FOR PERMIT	07/02/04
7	ISSUE FOR PERMIT	07/02/04
8	ISSUE FOR PERMIT	07/02/04
9	ISSUE FOR PERMIT	07/02/04
10	ISSUE FOR PERMIT	07/02/04
11	ISSUE FOR PERMIT	07/02/04
12	ISSUE FOR PERMIT	07/02/04

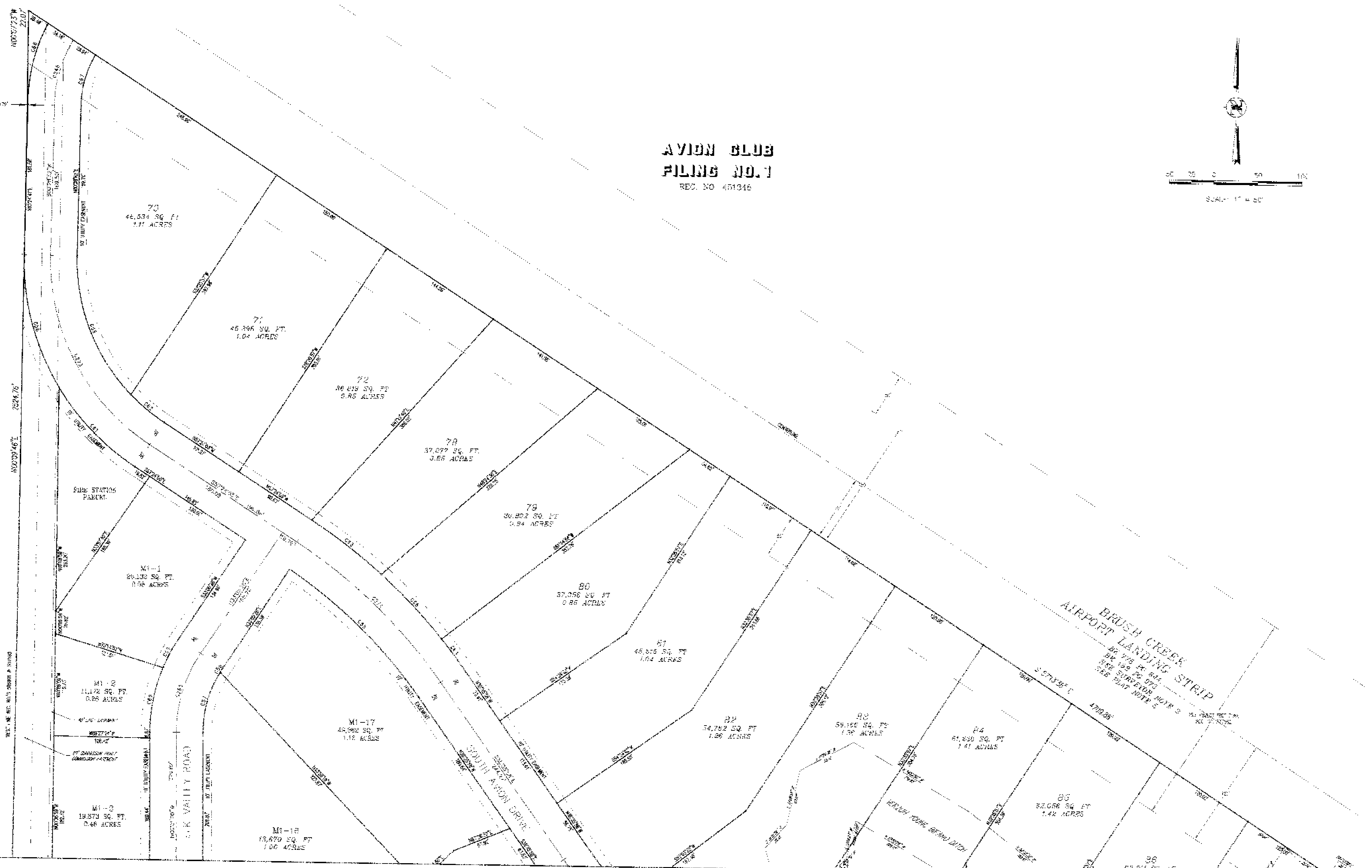
**REVISIONS**

<b>FINAL PLAT</b>	<b>2004</b>
<b>BUCKHORN RANCH FILING 2B</b>	
<b>CRESTED BUTTE, COLORADO</b>	

Drawn by: [blank] Checked by: KAP/LCP Approved by: KAP Project No: 4007 201.00 Date: 07/02/04 Title: Final Plat, 2b Date: 07/02/04	541322 13 P3
--	--------------------



**AVION CLUB  
 FILING NO. 1**  
 REC. NO. 451316



NO.	DATE	DESCRIPTION
1	02/15/04	PRELIMINARY PLAN
2	02/15/04	REVISIONS
3	02/15/04	REVISIONS
4	02/15/04	REVISIONS
5	02/15/04	REVISIONS
6	02/15/04	REVISIONS
7	02/15/04	REVISIONS
8	02/15/04	REVISIONS
9	02/15/04	REVISIONS
10	02/15/04	REVISIONS
11	02/15/04	REVISIONS
12	02/15/04	REVISIONS
13	02/15/04	REVISIONS
14	02/15/04	REVISIONS
15	02/15/04	REVISIONS
16	02/15/04	REVISIONS
17	02/15/04	REVISIONS
18	02/15/04	REVISIONS
19	02/15/04	REVISIONS
20	02/15/04	REVISIONS
21	02/15/04	REVISIONS
22	02/15/04	REVISIONS
23	02/15/04	REVISIONS
24	02/15/04	REVISIONS
25	02/15/04	REVISIONS
26	02/15/04	REVISIONS
27	02/15/04	REVISIONS
28	02/15/04	REVISIONS
29	02/15/04	REVISIONS
30	02/15/04	REVISIONS
31	02/15/04	REVISIONS
32	02/15/04	REVISIONS
33	02/15/04	REVISIONS
34	02/15/04	REVISIONS
35	02/15/04	REVISIONS
36	02/15/04	REVISIONS
37	02/15/04	REVISIONS
38	02/15/04	REVISIONS
39	02/15/04	REVISIONS
40	02/15/04	REVISIONS
41	02/15/04	REVISIONS
42	02/15/04	REVISIONS
43	02/15/04	REVISIONS
44	02/15/04	REVISIONS
45	02/15/04	REVISIONS
46	02/15/04	REVISIONS
47	02/15/04	REVISIONS
48	02/15/04	REVISIONS
49	02/15/04	REVISIONS
50	02/15/04	REVISIONS
51	02/15/04	REVISIONS
52	02/15/04	REVISIONS
53	02/15/04	REVISIONS
54	02/15/04	REVISIONS
55	02/15/04	REVISIONS
56	02/15/04	REVISIONS
57	02/15/04	REVISIONS
58	02/15/04	REVISIONS
59	02/15/04	REVISIONS
60	02/15/04	REVISIONS
61	02/15/04	REVISIONS
62	02/15/04	REVISIONS
63	02/15/04	REVISIONS
64	02/15/04	REVISIONS
65	02/15/04	REVISIONS
66	02/15/04	REVISIONS
67	02/15/04	REVISIONS
68	02/15/04	REVISIONS
69	02/15/04	REVISIONS
70	02/15/04	REVISIONS
71	02/15/04	REVISIONS
72	02/15/04	REVISIONS
73	02/15/04	REVISIONS
74	02/15/04	REVISIONS
75	02/15/04	REVISIONS
76	02/15/04	REVISIONS
77	02/15/04	REVISIONS
78	02/15/04	REVISIONS
79	02/15/04	REVISIONS
80	02/15/04	REVISIONS
81	02/15/04	REVISIONS
82	02/15/04	REVISIONS
83	02/15/04	REVISIONS
84	02/15/04	REVISIONS
85	02/15/04	REVISIONS
86	02/15/04	REVISIONS
87	02/15/04	REVISIONS
88	02/15/04	REVISIONS
89	02/15/04	REVISIONS
90	02/15/04	REVISIONS
91	02/15/04	REVISIONS
92	02/15/04	REVISIONS
93	02/15/04	REVISIONS
94	02/15/04	REVISIONS
95	02/15/04	REVISIONS
96	02/15/04	REVISIONS
97	02/15/04	REVISIONS
98	02/15/04	REVISIONS
99	02/15/04	REVISIONS
100	02/15/04	REVISIONS

FINAL PLAN  
 BUCKHORN RANCH FILING 2B  
 CRESTED BUTTE, COLORADO 80704

Drawn by: [Name]  
 Checked by: [Name]  
 Approved by: [Name]  
 Project No.: 5667-201-00  
 Date: 02/15/04

SHEET  
**P4**  
 4 OF 13 SHEETS

541322



NO.	DESCRIPTION	DATE
1	PRELIMINARY	10/20/04
2	FINAL	11/15/04

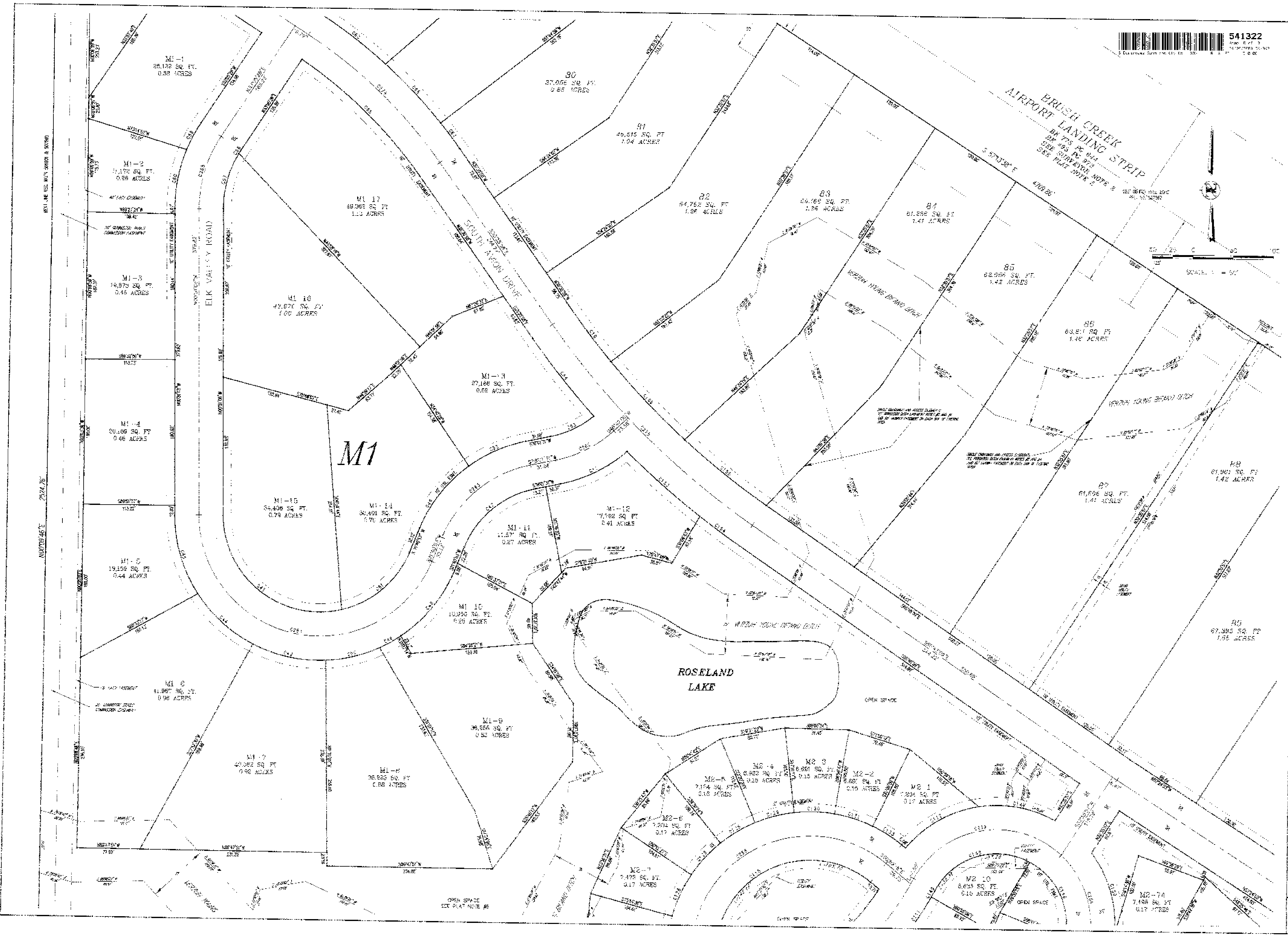
REVISIONS

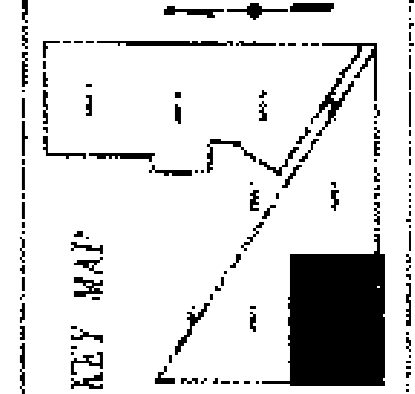
2004

FINAL PLAT  
 BUCKHORN RANCH FILING 28  
 CRESTED BUTTE, COLORADO

Project No. 186700100  
 Date: 02/05/04

Sheet  
 P5  
 5 of 13 SHEETS

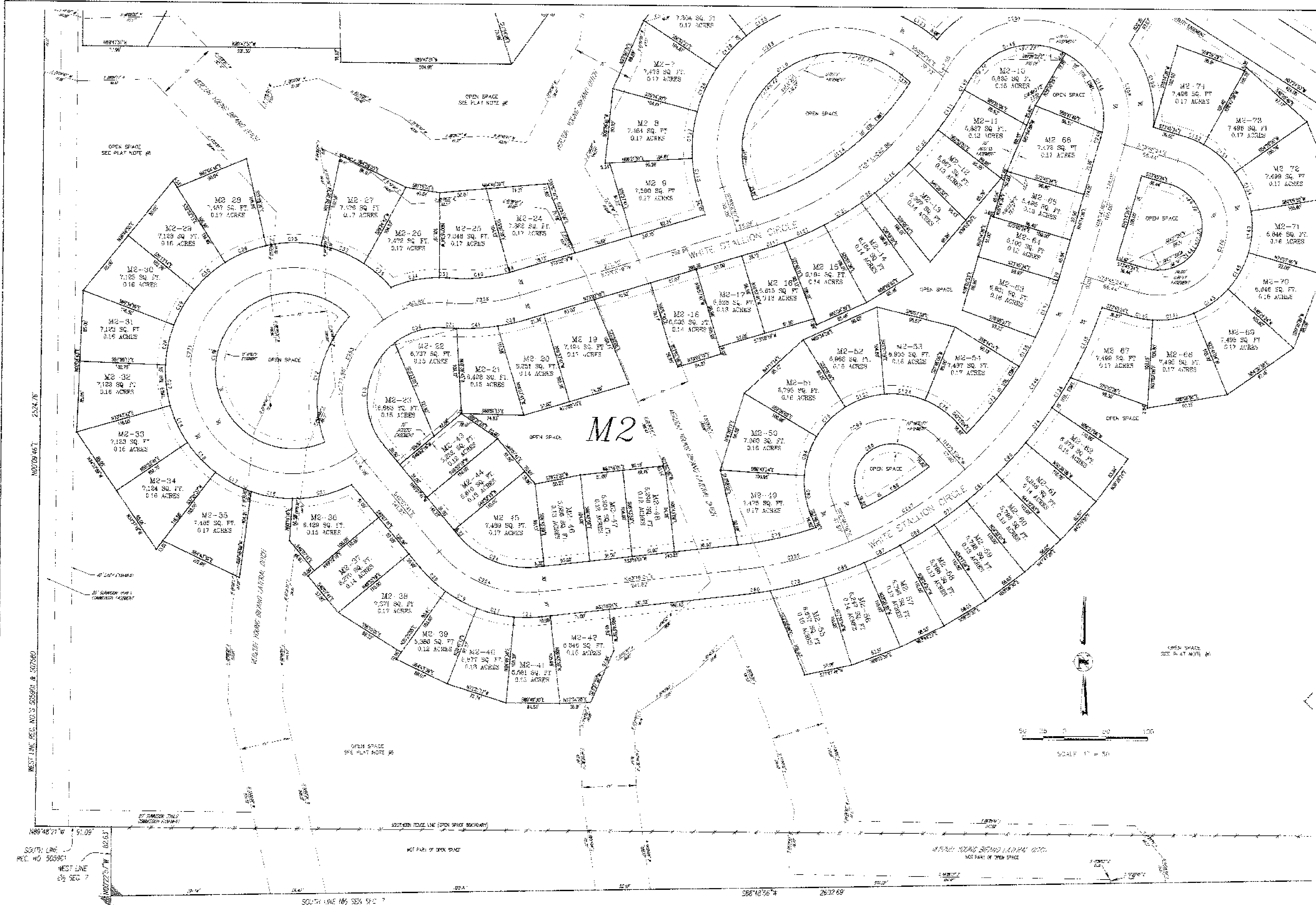




NO.	DATE	REVISIONS
1	4.1.02	REVISIONS TO PLANT
2	4.1.02	REVISIONS TO PLANT

FINAL PLAT  
 BUCKHORN RANCH FILING 2B  
 CRESTED BUTTE, COLORADO 2004

Drawn by: [Name]  
 Checked by: [Name]  
 Approved by: [Name]  
 Date: 08/05/04  
 Scale: 1" = 50'



2534.76  
 100.09 46.7

WEST LINE SEC. NO. 3 565901 & 502660

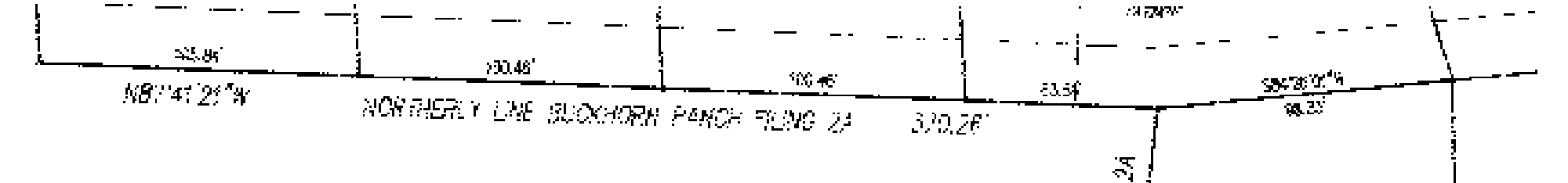
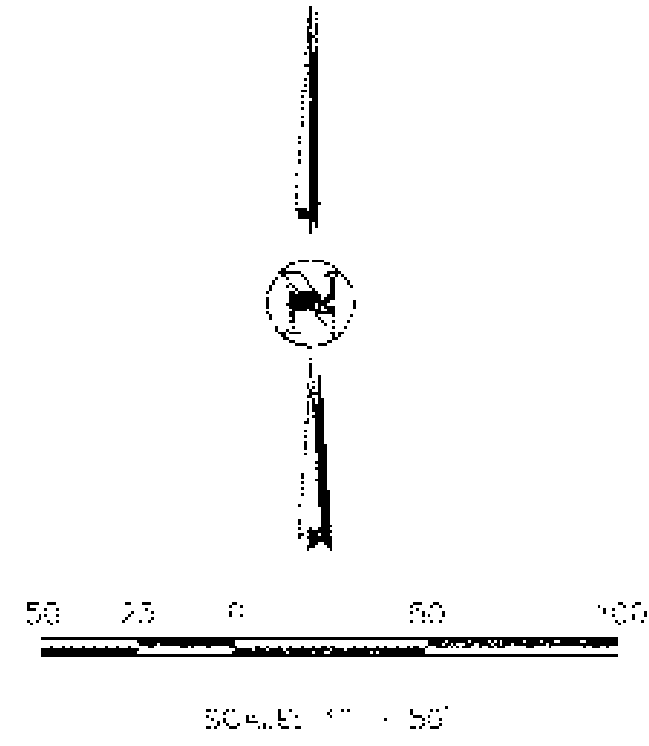
SOUTH LINE  
 REC. NO. 565901  
 WEST LINE  
 SEC. 7

SOUTH LINE 1/4 SEC. 7

286'10" 26" 2632.69

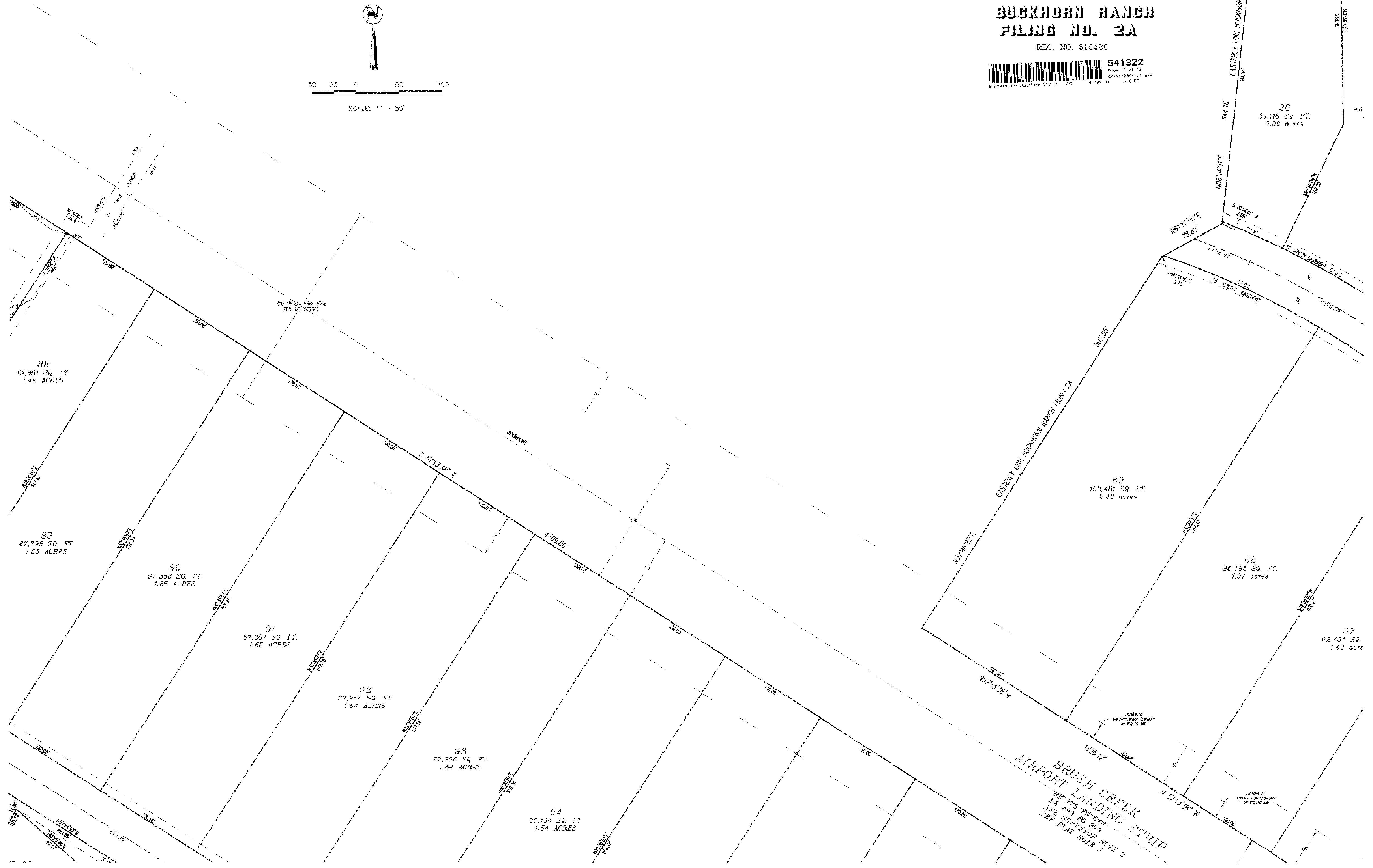
SCALE: 1" = 50'

**AVION CLUB  
FILING NO. 1**  
REC. NO. 451048

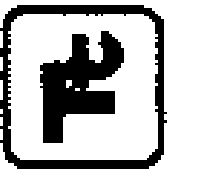


**BUCKHORN RANCH  
FILING NO. 2A**

REC. NO. 518420



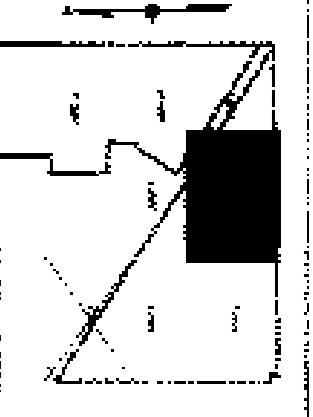
**TETRA TECH RMC, Inc.**  
1875 E. Douglas Ave., Suite 101, Commerce Village, CO, 80111  
TEL: 303.441.3911 FAX: 303.441.8157



NO.	DATE	DESCRIPTION
1	02/24/04	ISSUANCE OF PLAT
2	02/24/04	REVISIONS AND NOTES
3	02/24/04	ISSUANCE OF PLAT

**FINAL PLAT**  
**BUCKHORN RANCH FILING 2B**  
**CRESTED BUTTE, COLORADO**  
2004

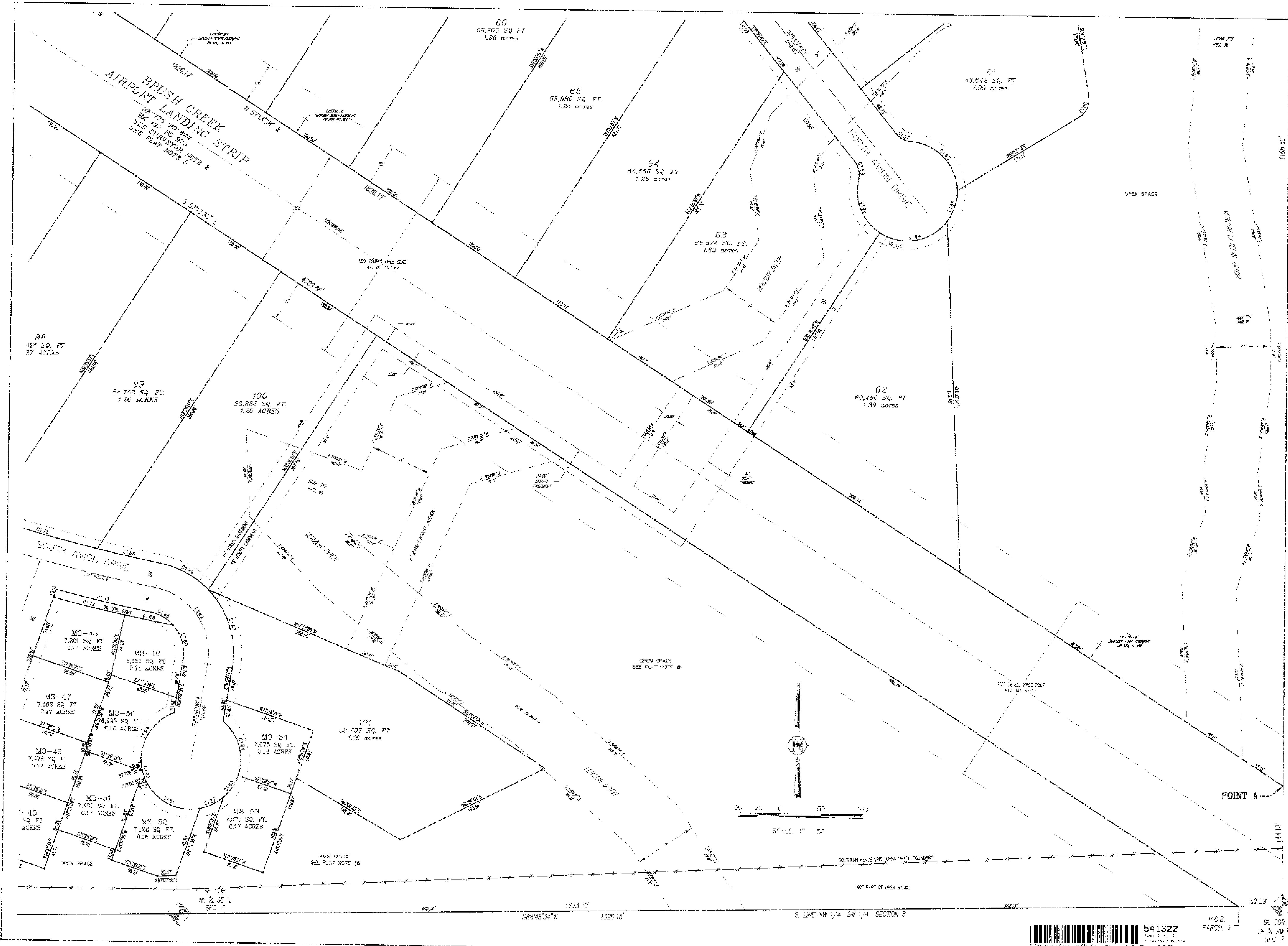
Drawn by: [blank]  
Checked by: KAT/ODA  
Approved by: KPP  
Project no.: 4667.001.00  
dwg name: Final\_Plat\_2b  
Date: 02/23/04



NO.	DESCRIPTION	DATE	BY
1	PRELIMINARY		
2	REVISED PER COMMENTS		
3	REVISED PER COMMENTS		
4	REVISED PER COMMENTS		
5	REVISED PER COMMENTS		
6	REVISED PER COMMENTS		
7	REVISED PER COMMENTS		
8	REVISED PER COMMENTS		
9	REVISED PER COMMENTS		
10	REVISED PER COMMENTS		
11	REVISED PER COMMENTS		
12	REVISED PER COMMENTS		
13	REVISED PER COMMENTS		
14	REVISED PER COMMENTS		
15	REVISED PER COMMENTS		
16	REVISED PER COMMENTS		
17	REVISED PER COMMENTS		
18	REVISED PER COMMENTS		
19	REVISED PER COMMENTS		
20	REVISED PER COMMENTS		
21	REVISED PER COMMENTS		
22	REVISED PER COMMENTS		
23	REVISED PER COMMENTS		
24	REVISED PER COMMENTS		
25	REVISED PER COMMENTS		
26	REVISED PER COMMENTS		
27	REVISED PER COMMENTS		
28	REVISED PER COMMENTS		
29	REVISED PER COMMENTS		
30	REVISED PER COMMENTS		
31	REVISED PER COMMENTS		
32	REVISED PER COMMENTS		
33	REVISED PER COMMENTS		
34	REVISED PER COMMENTS		
35	REVISED PER COMMENTS		
36	REVISED PER COMMENTS		
37	REVISED PER COMMENTS		
38	REVISED PER COMMENTS		
39	REVISED PER COMMENTS		
40	REVISED PER COMMENTS		
41	REVISED PER COMMENTS		
42	REVISED PER COMMENTS		
43	REVISED PER COMMENTS		
44	REVISED PER COMMENTS		
45	REVISED PER COMMENTS		
46	REVISED PER COMMENTS		
47	REVISED PER COMMENTS		
48	REVISED PER COMMENTS		
49	REVISED PER COMMENTS		
50	REVISED PER COMMENTS		
51	REVISED PER COMMENTS		
52	REVISED PER COMMENTS		
53	REVISED PER COMMENTS		
54	REVISED PER COMMENTS		
55	REVISED PER COMMENTS		
56	REVISED PER COMMENTS		
57	REVISED PER COMMENTS		
58	REVISED PER COMMENTS		
59	REVISED PER COMMENTS		
60	REVISED PER COMMENTS		
61	REVISED PER COMMENTS		
62	REVISED PER COMMENTS		
63	REVISED PER COMMENTS		
64	REVISED PER COMMENTS		
65	REVISED PER COMMENTS		
66	REVISED PER COMMENTS		
67	REVISED PER COMMENTS		
68	REVISED PER COMMENTS		
69	REVISED PER COMMENTS		
70	REVISED PER COMMENTS		
71	REVISED PER COMMENTS		
72	REVISED PER COMMENTS		
73	REVISED PER COMMENTS		
74	REVISED PER COMMENTS		
75	REVISED PER COMMENTS		
76	REVISED PER COMMENTS		
77	REVISED PER COMMENTS		
78	REVISED PER COMMENTS		
79	REVISED PER COMMENTS		
80	REVISED PER COMMENTS		
81	REVISED PER COMMENTS		
82	REVISED PER COMMENTS		
83	REVISED PER COMMENTS		
84	REVISED PER COMMENTS		
85	REVISED PER COMMENTS		
86	REVISED PER COMMENTS		
87	REVISED PER COMMENTS		
88	REVISED PER COMMENTS		
89	REVISED PER COMMENTS		
90	REVISED PER COMMENTS		
91	REVISED PER COMMENTS		
92	REVISED PER COMMENTS		
93	REVISED PER COMMENTS		
94	REVISED PER COMMENTS		
95	REVISED PER COMMENTS		
96	REVISED PER COMMENTS		
97	REVISED PER COMMENTS		
98	REVISED PER COMMENTS		
99	REVISED PER COMMENTS		
100	REVISED PER COMMENTS		
101	REVISED PER COMMENTS		
102	REVISED PER COMMENTS		
103	REVISED PER COMMENTS		
104	REVISED PER COMMENTS		
105	REVISED PER COMMENTS		
106	REVISED PER COMMENTS		
107	REVISED PER COMMENTS		
108	REVISED PER COMMENTS		
109	REVISED PER COMMENTS		
110	REVISED PER COMMENTS		
111	REVISED PER COMMENTS		
112	REVISED PER COMMENTS		
113	REVISED PER COMMENTS		
114	REVISED PER COMMENTS		
115	REVISED PER COMMENTS		
116	REVISED PER COMMENTS		
117	REVISED PER COMMENTS		
118	REVISED PER COMMENTS		
119	REVISED PER COMMENTS		
120	REVISED PER COMMENTS		
121	REVISED PER COMMENTS		
122	REVISED PER COMMENTS		
123	REVISED PER COMMENTS		
124	REVISED PER COMMENTS		
125	REVISED PER COMMENTS		
126	REVISED PER COMMENTS		
127	REVISED PER COMMENTS		
128	REVISED PER COMMENTS		
129	REVISED PER COMMENTS		
130	REVISED PER COMMENTS		
131	REVISED PER COMMENTS		
132	REVISED PER COMMENTS		
133	REVISED PER COMMENTS		
134	REVISED PER COMMENTS		
135	REVISED PER COMMENTS		
136	REVISED PER COMMENTS		
137	REVISED PER COMMENTS		
138	REVISED PER COMMENTS		
139	REVISED PER COMMENTS		
140	REVISED PER COMMENTS		
141	REVISED PER COMMENTS		
142	REVISED PER COMMENTS		
143	REVISED PER COMMENTS		
144	REVISED PER COMMENTS		
145	REVISED PER COMMENTS		
146	REVISED PER COMMENTS		
147	REVISED PER COMMENTS		
148	REVISED PER COMMENTS		
149	REVISED PER COMMENTS		
150	REVISED PER COMMENTS		
151	REVISED PER COMMENTS		
152	REVISED PER COMMENTS		
153	REVISED PER COMMENTS		
154	REVISED PER COMMENTS		
155	REVISED PER COMMENTS		
156	REVISED PER COMMENTS		
157	REVISED PER COMMENTS		
158	REVISED PER COMMENTS		
159	REVISED PER COMMENTS		
160	REVISED PER COMMENTS		
161	REVISED PER COMMENTS		
162	REVISED PER COMMENTS		
163	REVISED PER COMMENTS		
164	REVISED PER COMMENTS		
165	REVISED PER COMMENTS		
166	REVISED PER COMMENTS		
167	REVISED PER COMMENTS		
168	REVISED PER COMMENTS		
169	REVISED PER COMMENTS		
170	REVISED PER COMMENTS		
171	REVISED PER COMMENTS		
172	REVISED PER COMMENTS		
173	REVISED PER COMMENTS		
174	REVISED PER COMMENTS		
175	REVISED PER COMMENTS		
176	REVISED PER COMMENTS		
177	REVISED PER COMMENTS		
178	REVISED PER COMMENTS		
179	REVISED PER COMMENTS		
180	REVISED PER COMMENTS		
181	REVISED PER COMMENTS		
182	REVISED PER COMMENTS		
183	REVISED PER COMMENTS		
184	REVISED PER COMMENTS		
185	REVISED PER COMMENTS		
186	REVISED PER COMMENTS		
187	REVISED PER COMMENTS		
188	REVISED PER COMMENTS		
189	REVISED PER COMMENTS		
190	REVISED PER COMMENTS		
191	REVISED PER COMMENTS		
192	REVISED PER COMMENTS		
193	REVISED PER COMMENTS		
194	REVISED PER COMMENTS		
195	REVISED PER COMMENTS		
196	REVISED PER COMMENTS		
197	REVISED PER COMMENTS		
198	REVISED PER COMMENTS		
199	REVISED PER COMMENTS		
200	REVISED PER COMMENTS		

FINAL PLAN  
 BUCKHORN RANCH FILING 2B  
 CRESTED BUTTE, COLORADO 2004





EAST LINE N/4 SW/4 SEC 8  
1986.95' 1327.74'

**TETRA TECH RMC, Inc.**  
 8801 E. Sprague Ave., Suite 303, Greenwood Village, CO 80121  
 TEL: 303.771.8500 FAX: 303.771.3100



NO.	DATE	DESCRIPTION
1	4/2/04	PRELIMINARY PLAN
2	1/12/04	REVISION: PER CITY
3	1/12/04	REVISION: PER CITY
4	1/12/04	REVISION: PER CITY
5	1/12/04	REVISION: PER CITY
6	1/12/04	REVISION: PER CITY
7	1/12/04	REVISION: PER CITY
8	1/12/04	REVISION: PER CITY
9	1/12/04	REVISION: PER CITY
10	1/12/04	REVISION: PER CITY

**FINAL PLAT**  
**BUCKHORN RANCH FILING 28**  
**CRESTED BUTTE, COLORADO**  
**2004**

Drawn by: TS  
 Checked by: KAY/JKA  
 Approved by: MJD  
 Project no.: 489701.00  
 Job name: Final Plat of 28  
 Date: 02/02/04

9 of 13 SHEETS

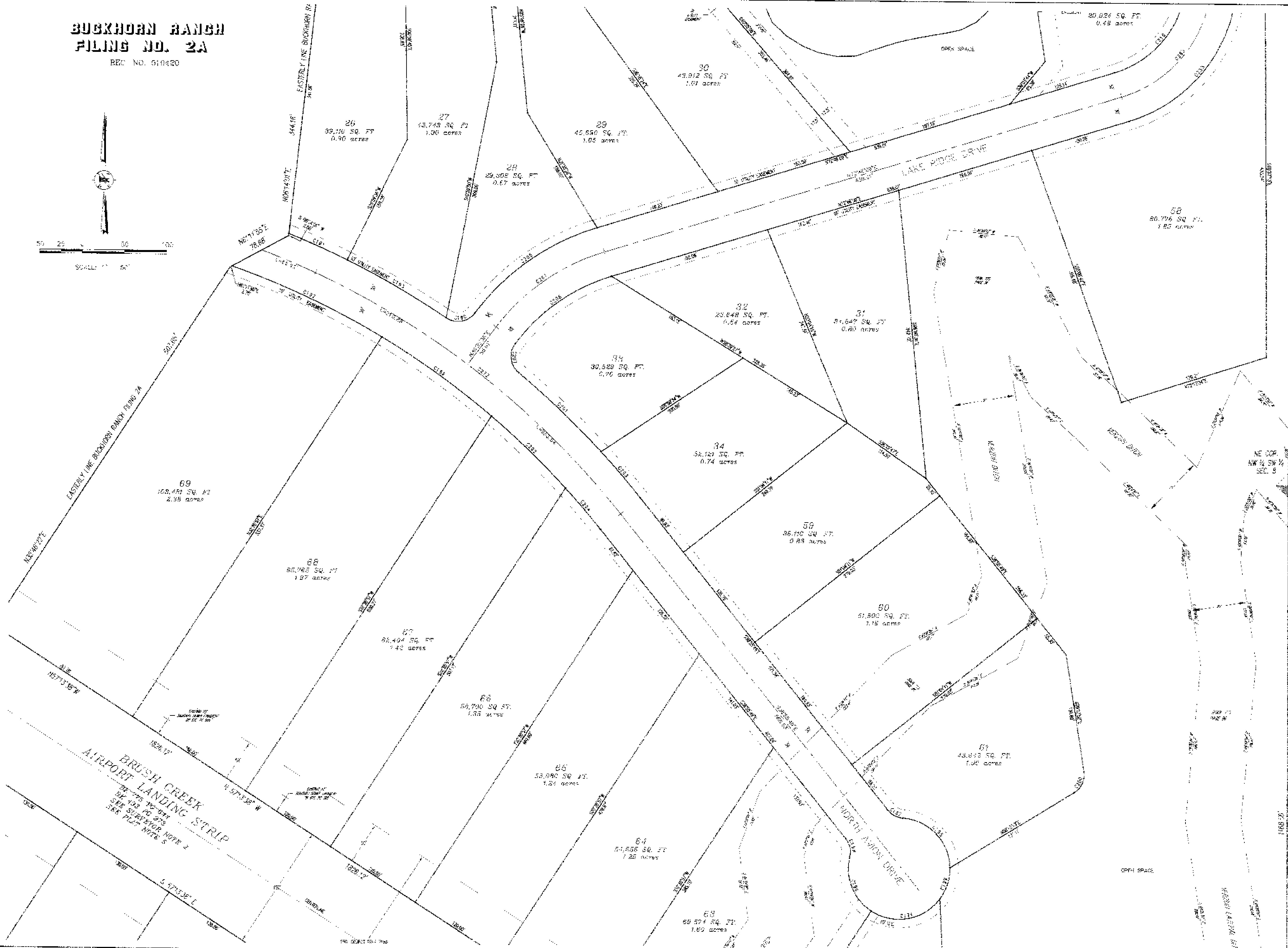
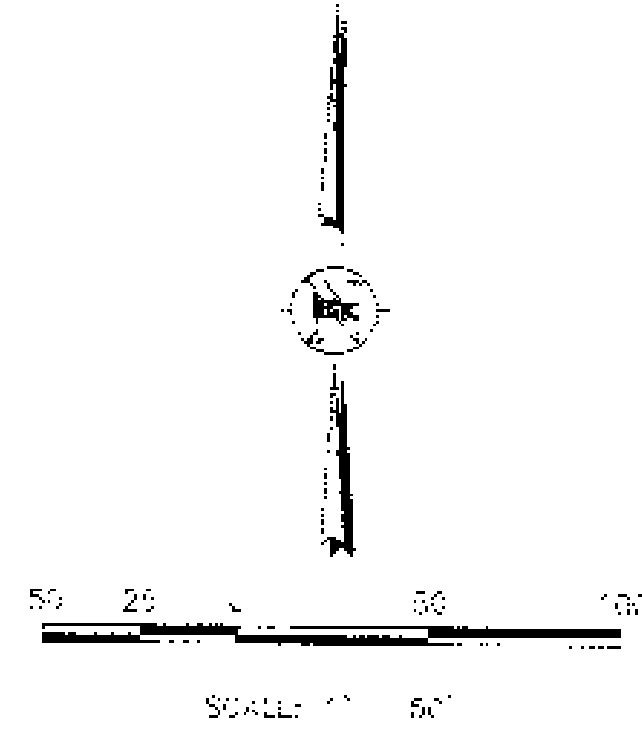


NOB. PARCEL 2  
 SEC 8 SW 1/4 SEC 7

S. LINE NW 1/4 SW 1/4 SECTION 8

**BUCKHORN RANCH  
FILING NO. 2A**

REC. NO. 510420



1688 26 132.74  
 50020012  
 541322  
 1688 26 132.74  
 EAST 1/4 SEC. 8  
 T12N R10E S10W SEC. 8  
 JUST USE W/5 NW/4 SEC. 8  
 2580.85  
 1688 26 132.74

**TETRA TECH RMC, Inc.**  
 4801 E. Sprague Ave., Suite 201, Colorado Springs, CO 80911  
 TEL: 719.574.6200 FAX: 719.574.8100

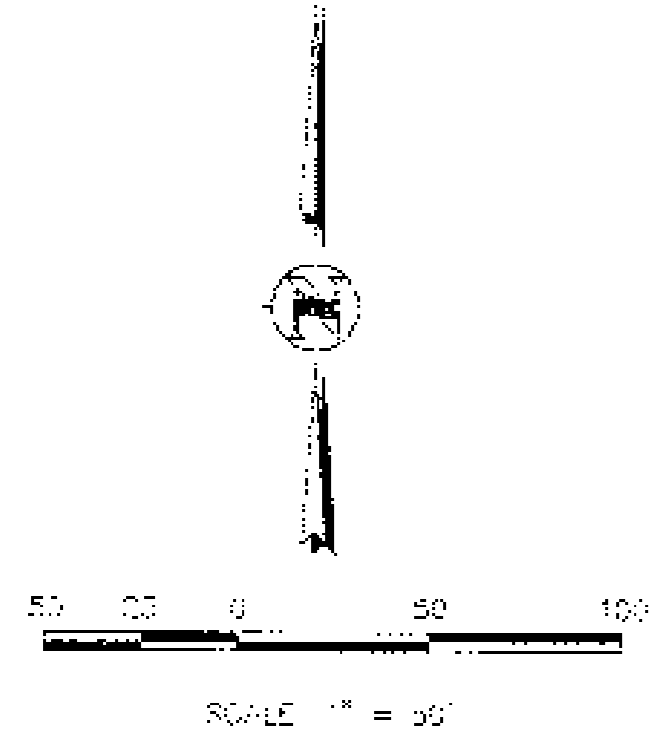
**KEY MAP**

NO.	DESCRIPTION	DATE
1	PRELIMINARY PLAT	2004
2	REVISIONS	

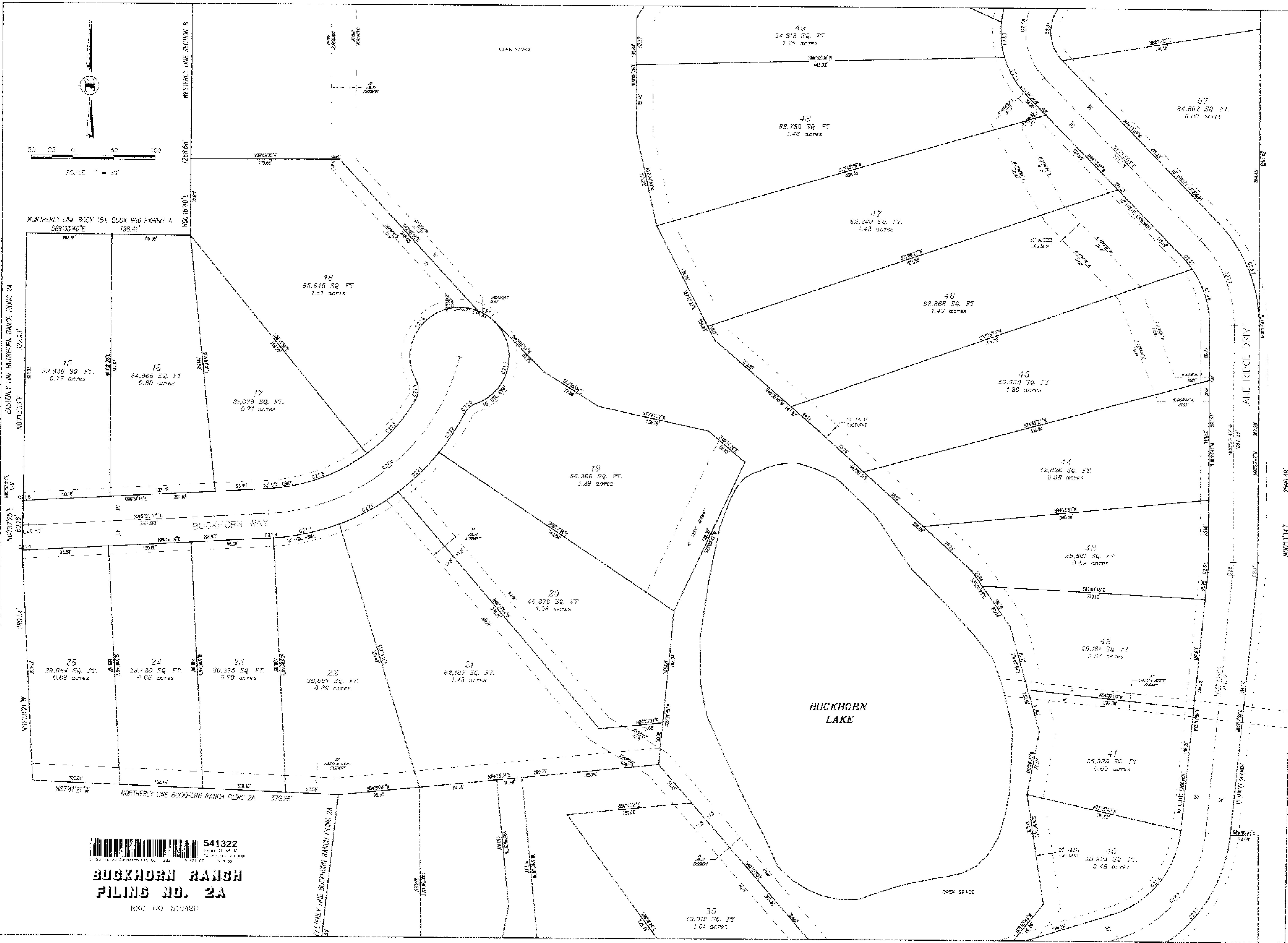
**FINAL PLAT**  
**BUCKHORN RANCH FILING 2B**  
**CRESTED BUTTE, COLORADO 2004**

Drawn by: [ ]  
 Checked by: [ ]  
 Approved by: [ ]  
 Project no.: 4807 001 20  
 Drawing name: Final Plat 2B  
 Date: 02/23/04

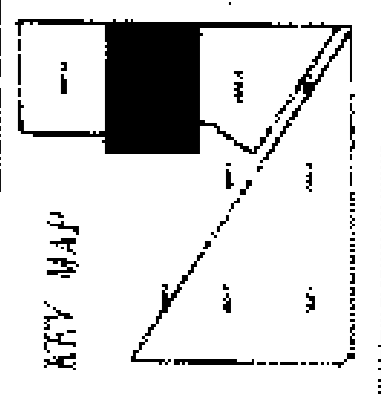
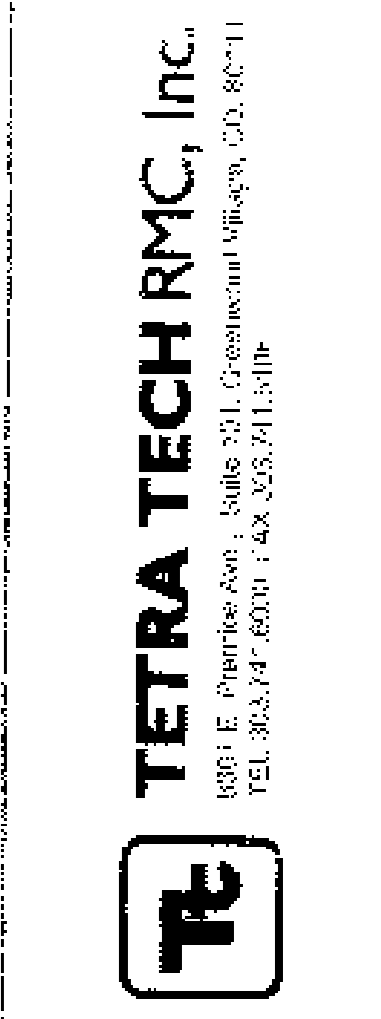
**SHEET**  
**P10**  
 10 of 13 SHEETS



NORTHERLY LINE BOOK 154, BOOK 956 EXHIBIT A  
S89°33'40"E 198.41'



**BUCKHORN RANCH**  
**FILING NO. 2A**  
RMC NO 510428



NO.	DESCRIPTION OF CHANGE	DATE	BY

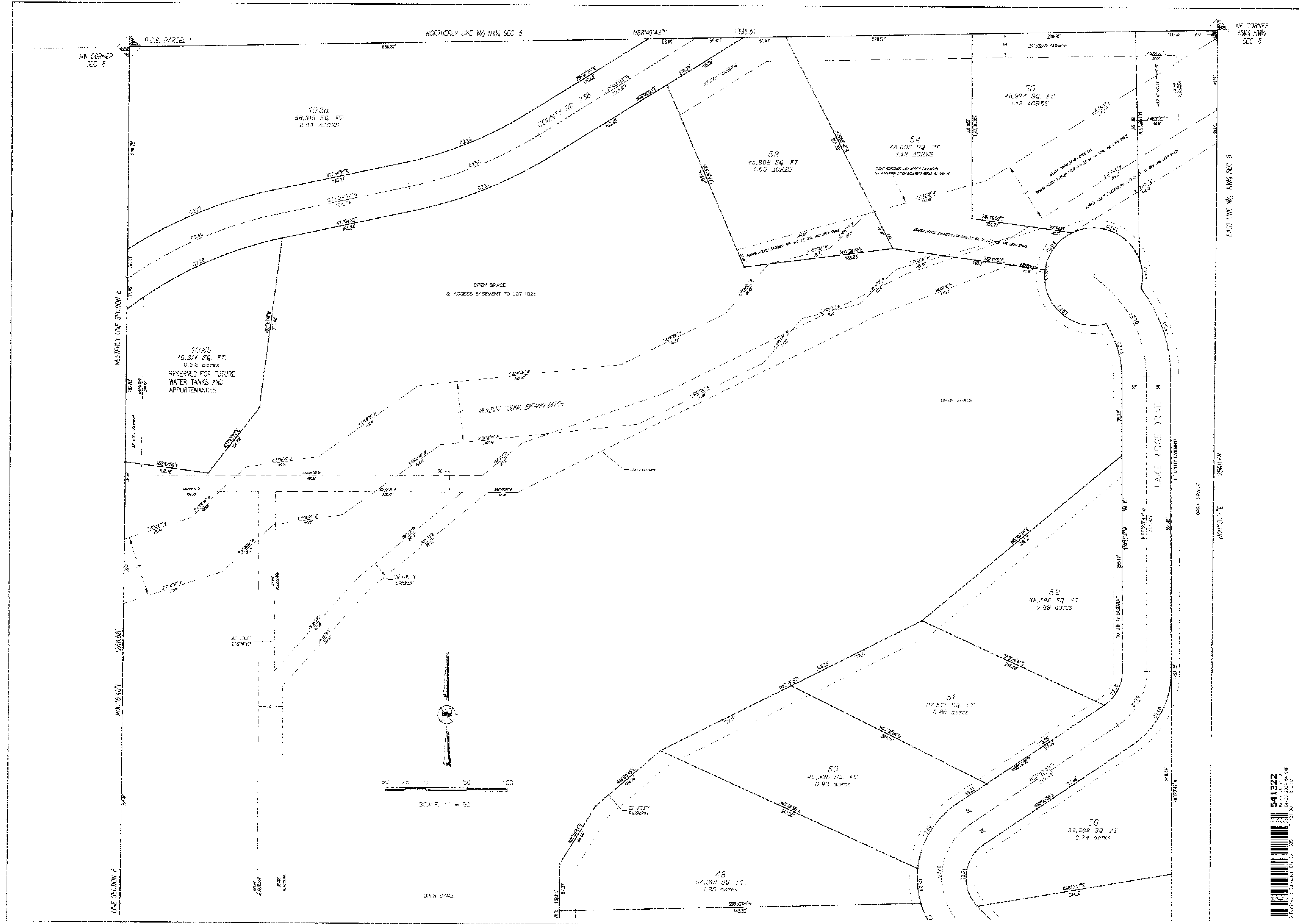
**FINAL PLAT**  
**BUCKHORN RANCH FILING 2B**  
**CRESTED BUTTE, COLORADO**

2004  
 SHEET  
**P11**  
 11 OF 13 SHEETS

REVISIONS

**TETRA TECH RMC, Inc.**  
 1801 E. Phillips Ave., Suite 301, Crested Butte, CO, 81611  
 TEL: 970.247.6000 FAX: 970.241.1000

N0070347 25896 AB  
 EAST LINE W/2 6W/4 SEC. 8



**TETRA TECH RMC, Inc.**  
 8801 E. Sprague Ave., Suite 201, Greenwood Village, CO 80121  
 TEL: 303.441.4000 FAX: 303.791.6106



NO.	DATE	DESCRIPTION
1	10/20/04	ISSUING THE PLAT
2	10/20/04	REVISIONS PER CLIENT

**FINAL PLAT**  
**BUCKHORN RANCH FILING 2B**  
**CRESTED BUTTE, COLORADO**

2004  
 drawn by: [Name]  
 checked by: [Name]  
 approved by: [Name]  
 project no.: 4687-061.00  
 dwg name: Final\_Plat\_2B.dwg  
 date: 10/20/04



