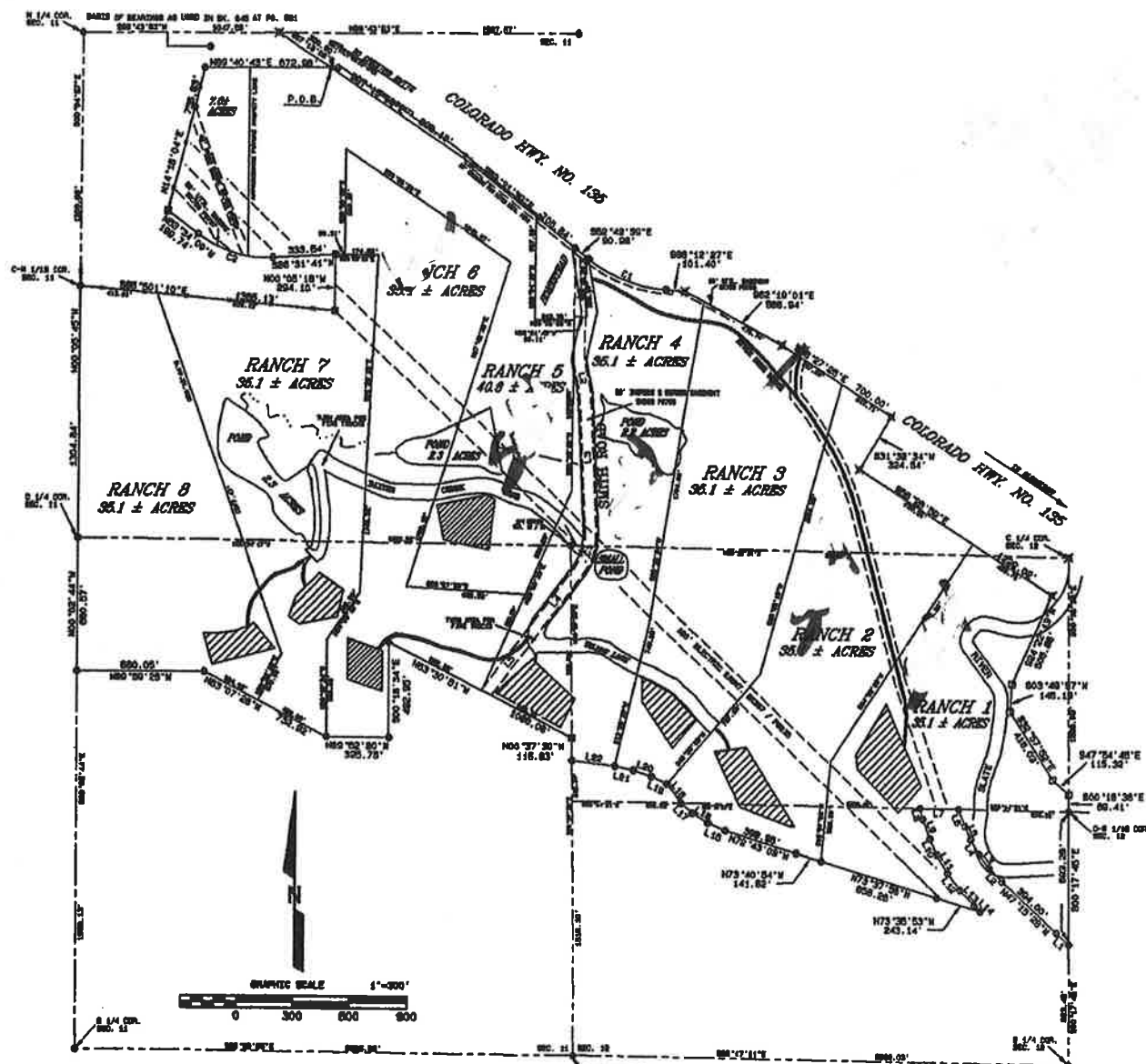


WHETSTONE MOUNTAIN RANCH

E 1/2 SEC. 11 & W 1/2 SEC. 12, T14S, R86W, 6th P.M.



LEGEND

- U.S.S.L.O. BRASS CAP
- PD. 1 1/8" SQUARE IRON BAR
- ✕ TO BE SET 3 1/4" ALUM. MON. BY C.D.O.T.
- PD. #4 REBAR 1/2" TAG LS 8763
- PD. #6 REBAR 1/2" CAP MARKED ALPINE SURVEY LS 23002
- PD. #6 REBAR 1/2" CAP MARKED H.S.C. LS 0478
- ▲ PD. ANGLE IRON
- PD. 3/4" IRON BAR
- TO BE SET #6 REBAR 1/2" ALUM. CAP STAMPED D H SURVEYS LS 20677
- TO BE SET 3 1/4" ALUM. MONUMENT STAMPED D H SURVEYS LS 20677
- CANALS AND DITCHES



EXTERIOR BOUNDARY

L/C	DELTA	RADIUS	ARC	CH. BEG.	CH. END
C1	33° 05' 18"	720.30	455.83	N50° 18' 05" W	448.05'
L1			85.07'	N49° 34' 08" W	
L2			87.00'	S43° 25' 08" E	
L3			90.00'	S30° 00' 00" E	
L4			80.80'	S30° 00' 00" E	
L5			78.00'	S41° 23' 08" W	
L6			89.00'	S21° 00' 00" W	
L7			107.30'	N49° 18' 05" W	
L8			111.00'	S43° 25' 08" E	
L9			105.00'	S30° 00' 00" E	
L10			84.80'	S41° 23' 08" W	
L11			111.00'	N50° 18' 05" W	
L12			111.00'	S43° 25' 08" E	
L13			111.00'	S30° 00' 00" E	
L14			44.00'	S47° 31' 18" W	
L15			100.88'	S37° 47' 30" E	
L16			85.88'	N47° 08' 18" W	
L17			78.88'	S43° 08' 12" E	
L18			100.81'	N50° 18' 05" W	
L19			88.88'	S47° 31' 18" W	
L20			103.08'	N71° 08' 03" W	
L21			101.88'	S78° 23' 07" E	
L22			250.88'	N43° 47' 30" E	
C2	30° 02' 06"	814.00'	477.40'	S73° 31' 02" W	418.05'

CENTER LINE ROAD EASEMENT

L/C	DELTA	RADIUS	ARC	CH. BEG.	CH. END
L1			658.72'	S55° 28' 10" W	
L2			174.08'	S18° 28' 12" E	
L3			718.87'	S28° 28' 30" E	
C1	40° 53' 15"	500.00'	812.34'	S18° 27' 36" W	207.25'
L4			418.84'	S38° 00' 37" W	
L5			390.78'	S30° 30' 37" W	

WHETSTONE MOUNTAIN RANCH
 LOCATED IN THE
 E 1/2 SEC. 11 & W 1/2 SEC. 12, T14S, R86W, 6th
D H SURVEYS INC.
 118 CURAY AVE. - GRAND JUNCTION, CO
 (970) 245-8748