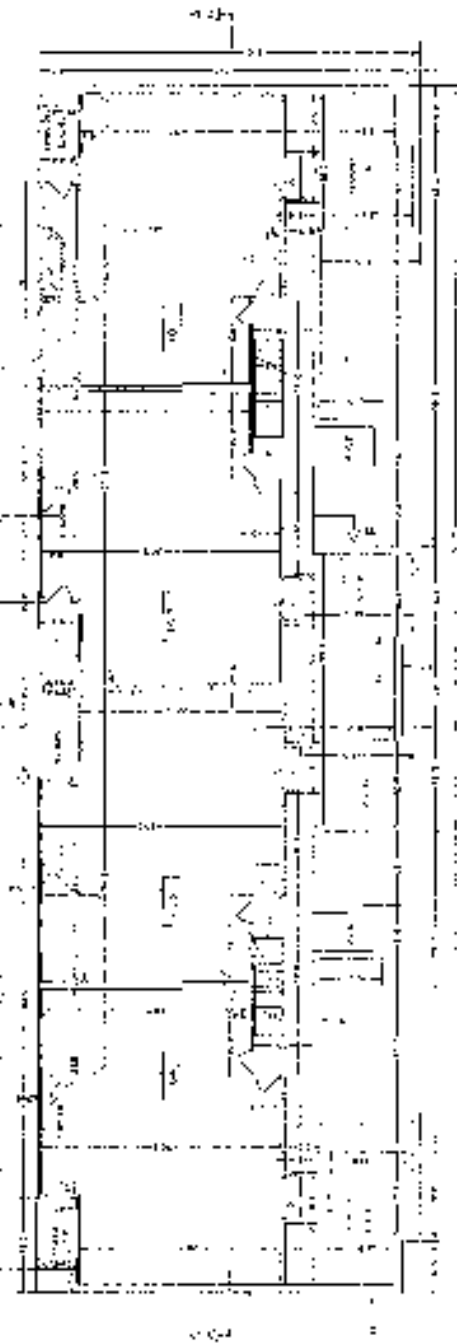


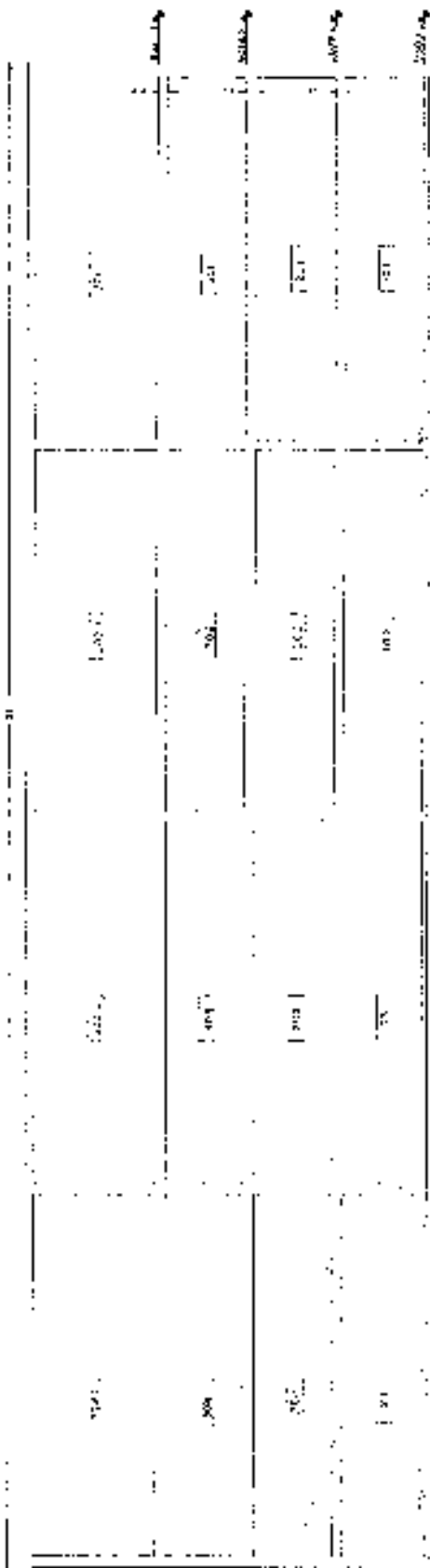
SECTION FLOOR



SECTION FLOOR

SAN MORITZ COMBINATION
KEYSTONE BUILDING

2017
 GEORGE W. BROWN ARCHITECTS, INC.
 1000 15th Street, N.W.
 Washington, D.C. 20004
 Phone: 202-462-1100
 Fax: 202-462-1101
 www.georgebrown.com



SECTION 102A

102A, 102B, 102C, 102D, 102E, 102F, 102G, 102H, 102I, 102J, 102K, 102L, 102M, 102N, 102O, 102P, 102Q, 102R, 102S, 102T, 102U, 102V, 102W, 102X, 102Y, 102Z

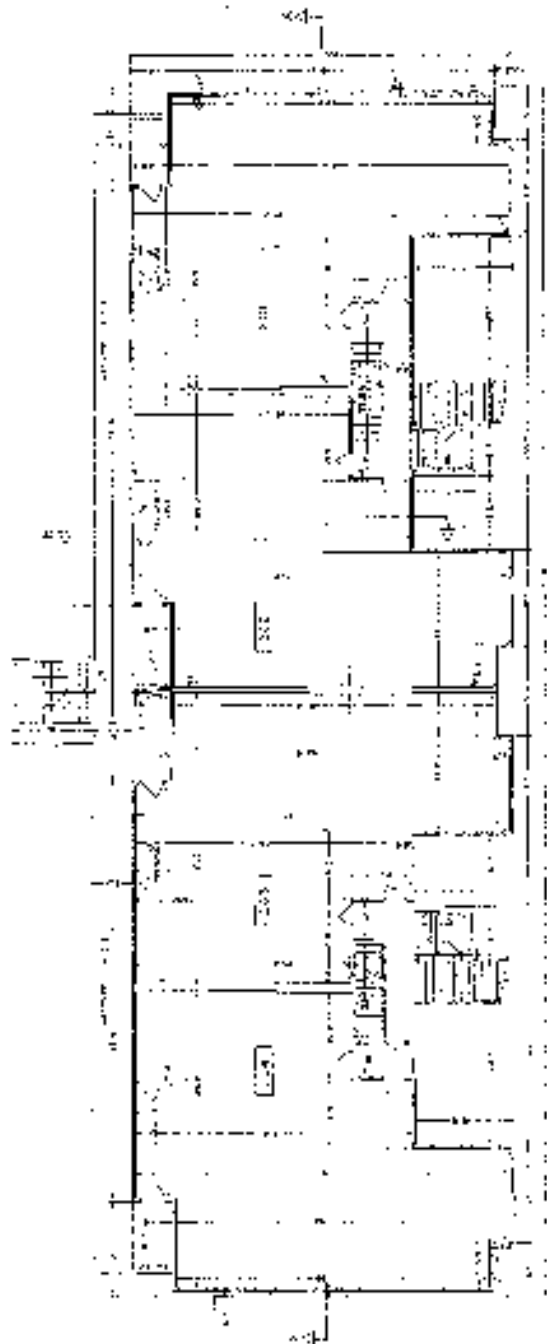
102A, 102B, 102C, 102D, 102E, 102F, 102G, 102H, 102I, 102J, 102K, 102L, 102M, 102N, 102O, 102P, 102Q, 102R, 102S, 102T, 102U, 102V, 102W, 102X, 102Y, 102Z



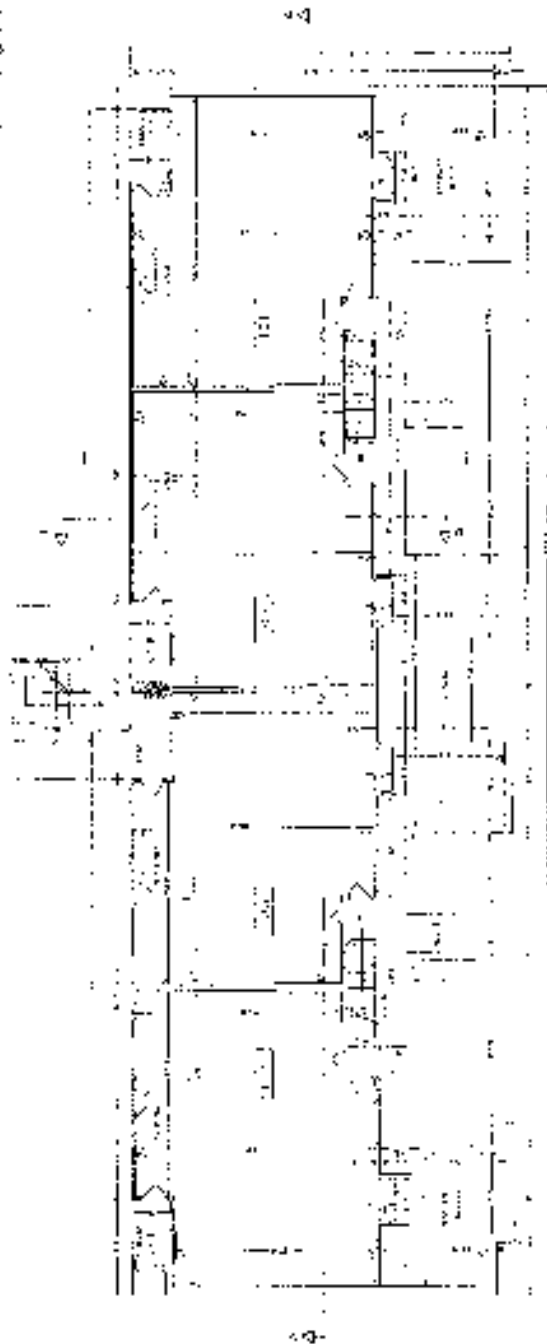
SECTION 102B

SAN MORTZ CONDOMINIUM
KEYSTONE BUILDING

ROBERT P. HARRIS & ASSOCIATES, INC.
ARCHITECTS
1000 N. GARDEN AVENUE, SUITE 100
DENVER, COLORADO 80202



SECOND FLOOR



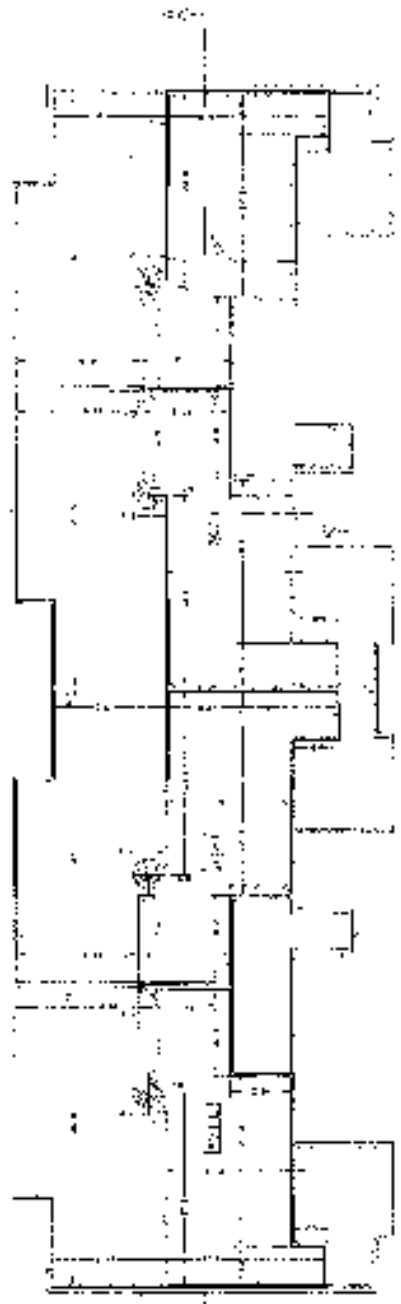
FIRST FLOOR

SAN MERTZ CONDOMINIUM

JOSEPH W. HARRIS ARCHITECTS

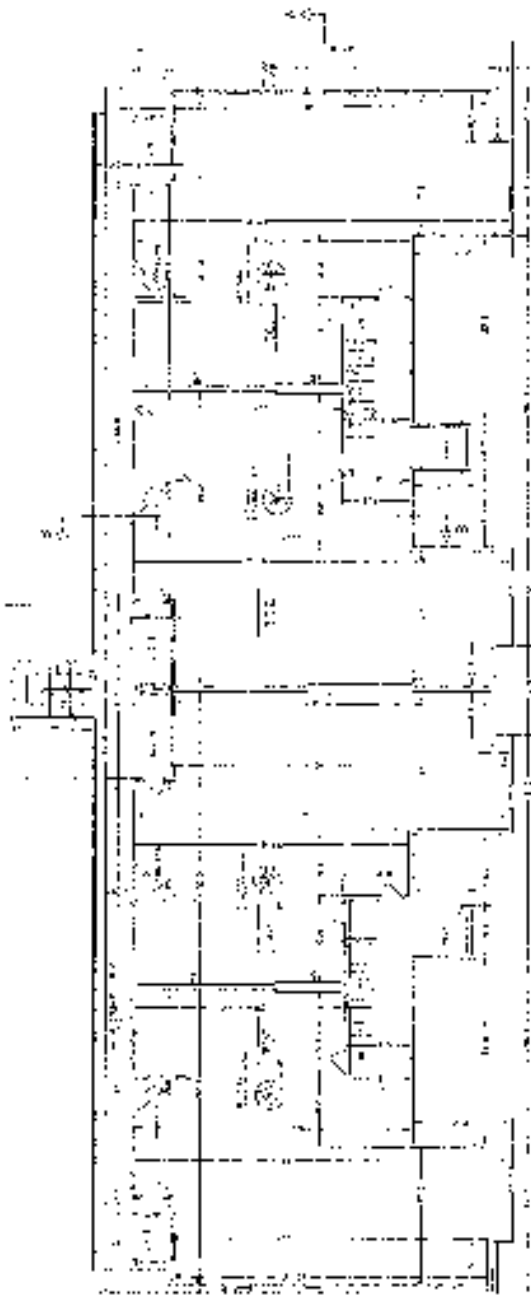
JUNE 1977
 ROBERT E. HARRIS & ASSOCIATES, INC.
 ARCHITECTS
 1000 ...
 ...

45'



4TH FLOOR LOFT AREA

ALL DIMENSIONS ARE TO FACE UNLESS OTHERWISE NOTED
 ALL WALLS ARE 12" THICK UNLESS OTHERWISE NOTED
 ALL DOORS ARE 36" WIDE UNLESS OTHERWISE NOTED



4TH FLOOR

SAN MORITZ CONDOMINIUM

WOREVILLE BUILDING

ROBERT C. HAMILTON & ASSOCIATES, INC.
 ARCHITECTS
 1000 W. 10TH STREET
 WASHINGTON, D.C. 20004

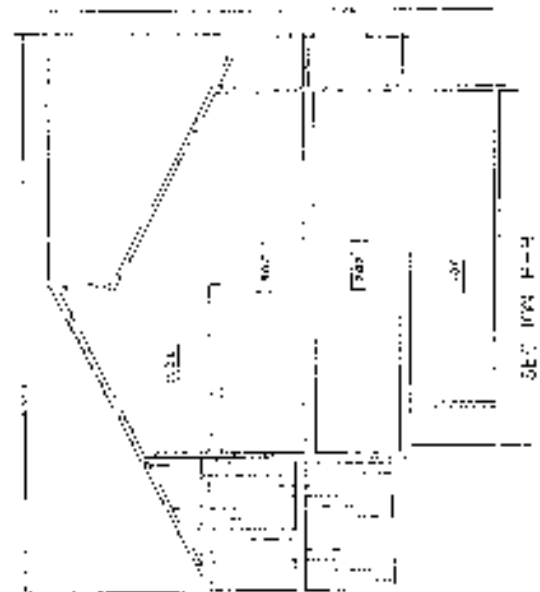
DATE: 11/11/88
 DRAWING NO.: 4500-01



SECTION D-A

ALL DIMENSIONS SHOWN ARE APPROXIMATE AND SUBJECT TO FIELD VERIFICATION.

DATE: 10/15/2010
 DRAWN BY: [illegible]



SECTION D-B

SAN MORITZ CONDOMINIUM
 JOYCEVILLE BUILDING

DATE: 10/15/2010
 DRAWN BY: [illegible]